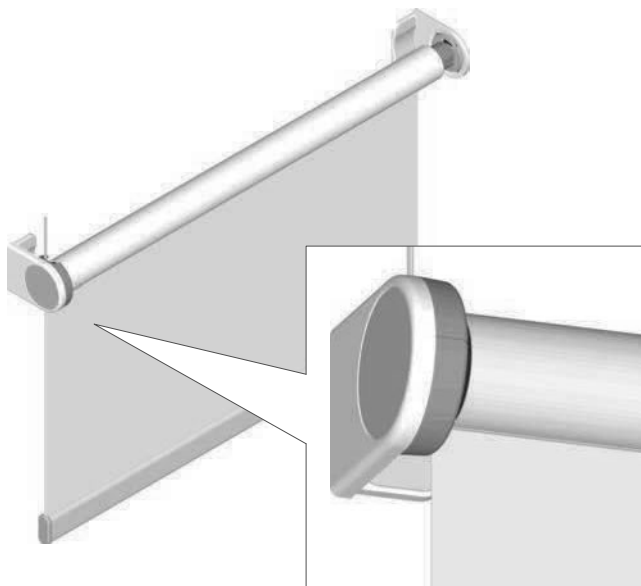


Roller Blind 5-16

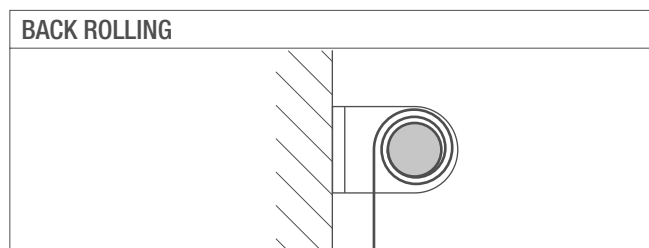
MOTOR OPERATED ROLLER BLIND INSTALLED ON END BRACKETS M

Description

- Pearl chrome finished die cast design brackets
 - Optional powder coated steel brackets in grey, black or white
- Integrated leveling function to limit skewing
 - Optional add-on leveler or no leveler
- Range of motors available depending on requirements
 - Current: 24V or 230V
 - Force from 3.5 kg to 15 kg
 - Noise standard or quiet
 - Wired control (recommended) or remote
- Spring-loaded end plug for easy installation and maintenance
- Aluminium extruded tubes
- Aluminium extruded bottom rail, natural anodised, black or white
 - Optional oval shaped bottom rail
- Back or front rolling
- UV stable parts
- High quality fabric according to technical specifications

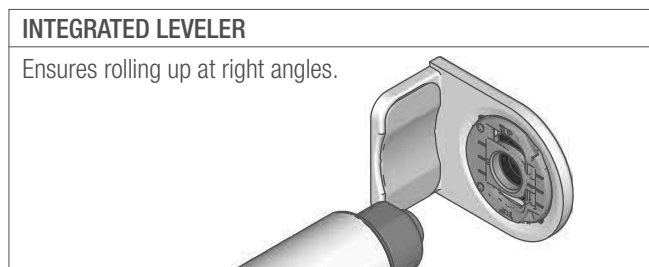


LIGHT GAPS (mm)		
Drive side		
Motor LT 28	22	a
Motor LS 40	23	a
Motor M 40	23	a
Bearing side		
	16	b



SIZE LIMITATIONS*

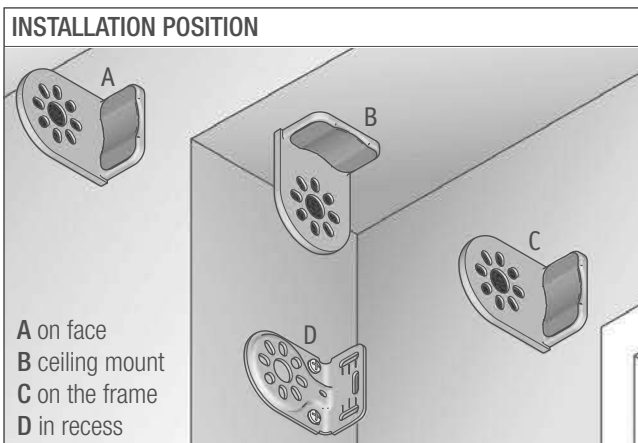
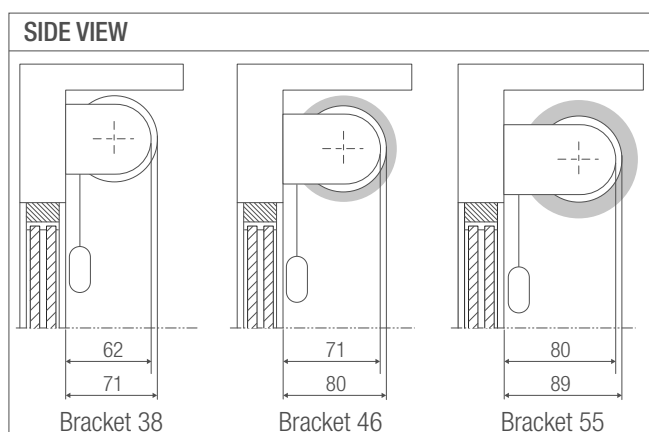
Min. width	380 - 645 mm (depending on motor size)
Max. width	3600 mm
Min. height	500 mm
Max. height	4000 mm
Max. surface	single blind; 12 m ² coupled blinds; 34 m ²



MAXIMUM LOAD (KG)*

Type	U	Tube 31	Tube 37	Tube 50
Motor LT 28	24V	4.0	3.5	-
Motor LS 40	230V	-	-	15.0
Motor M 40	230V	-	-	15.0

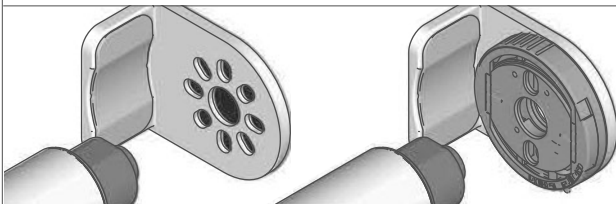
Maximum load = bottom rail + (optional) additional weight + fabric



OPTIONS Roller Blind 5-16

The technical terms on this page are clarified in the glossary in the back.

LEVELER



No leveler

Add-on leveler

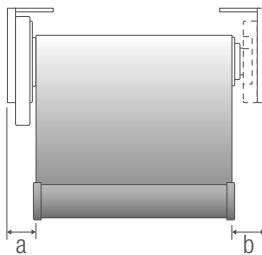
LIGHT GAPS (mm)

Drive side

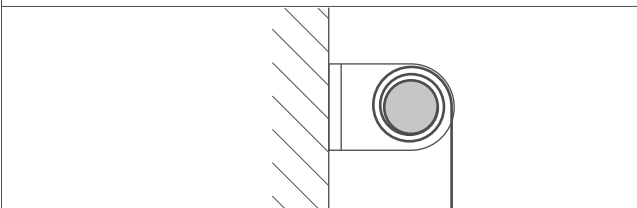
Motor LT 28	22	a
Motor LS 40	23	a
Motor M 40	23	a

Bearing side

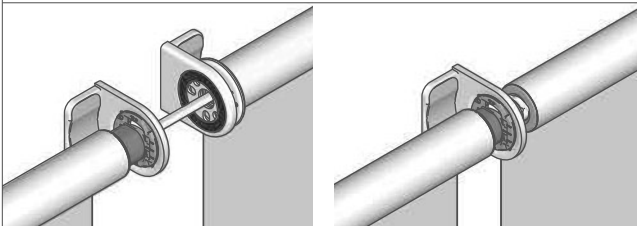
Integrated leveler (std)	16	b
No leveler	14	b
Add-on leveler	23	b



FRONT ROLLING

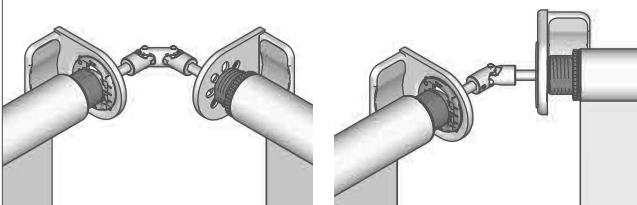


COUPLING (see page 174)



Straight coupling with aligner

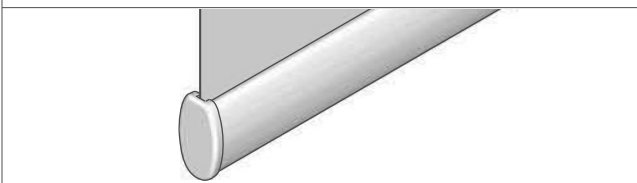
Straight coupling



90° coupling

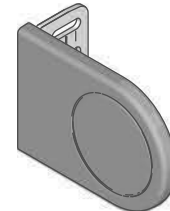
45° coupling

OVAL BOTTOM RAIL

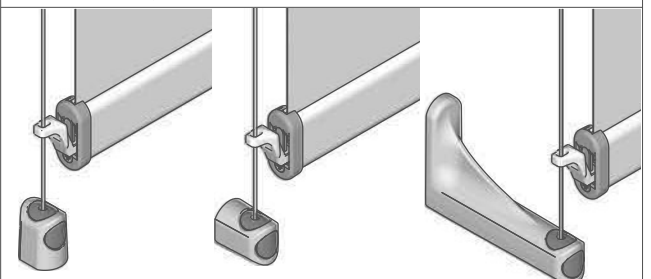


BRACKETS

Steel bracket with plastic cover



SIDE GUIDING; SPRING TENSIONED CABLE



In recess

On face

On face, front rolling

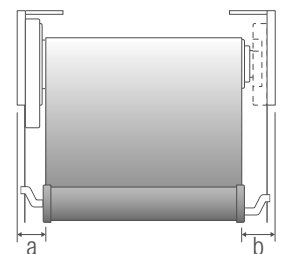
LIGHT GAPS (mm)

Drive side

Motor LT 28	22	a
Motor LS 40	23	a
Motor M 40	23	a

Bearing side

Integrated leveler (std)	20	b
No leveler	20	b
Add-on leveler	23	b



*Size limitations and maximum load depend on operation type and are further calculated on the basis of a fabric with; weight = 345 gr/m², thickness = 0.44 mm. Maximum deflection of tube 31 = 3 mm, tube 37 = 4 mm, tube 50 = 5 mm.