

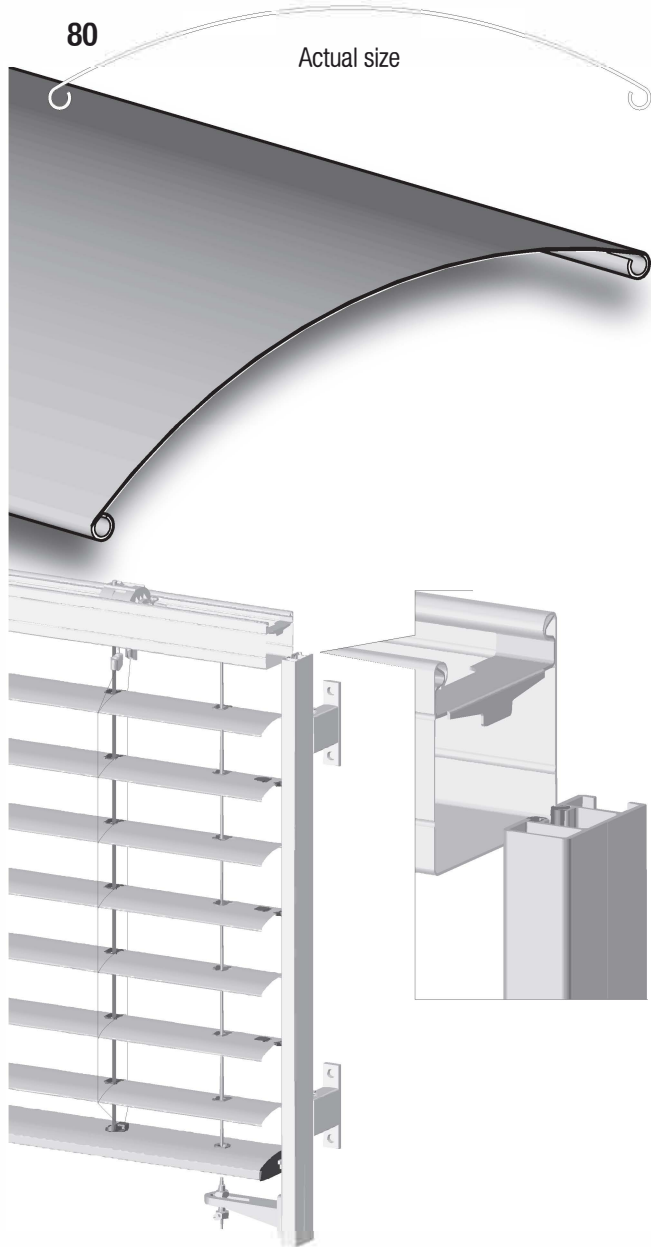
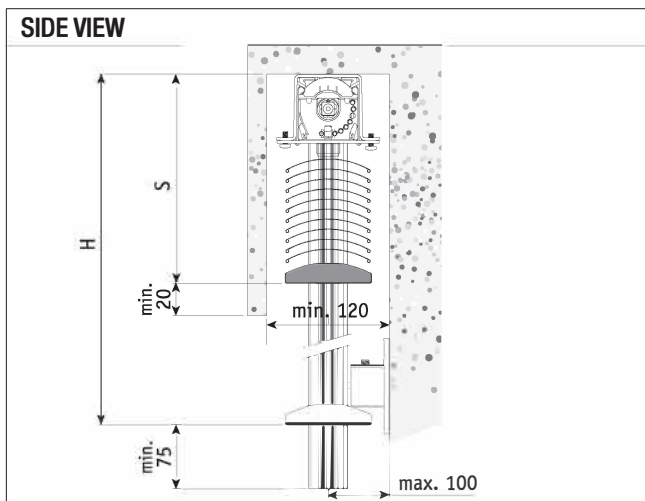
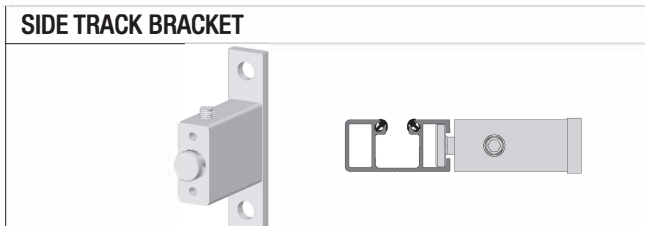
EL80ASKW

MOTOR OPERATED EXTERNAL VENETIAN BLIND WINDSTABLE 80 MM SLATS WITH CLAMP-ON SIDE GUIDING CHANNELS

EL80ASKW : beaded 80 mm slats

Description

- Roll formed zinc-plated steel U-shaped head rail 57 x 51 mm
- Thermally protected 230 V motor, dust and splash waterproof according to IP54
- Positive tilting mechanism to prevent slat movement by wind
- Lowering with slats closed, raising with slats 45° open
- Roll formed coil coated 80 mm slats of partly recycled aluminium
- Natural anodised or powder coated extruded aluminium bottom rail 80 x 22 mm
- Extruded side guiding channels 18 x 37 mm with groove in similar finish and black insert for noise reduction
- Black bottom rail end caps, lift tape and Aramid reinforced polyester ladder cords
- UV and weather resistant components of mixed composition
- Wind stable
 - Additional side guiding cables at 90 mm from backside side guiding
 - Intermediate guiding cable above product width of 1300 mm
 - Maximum distance to façade: 100 mm



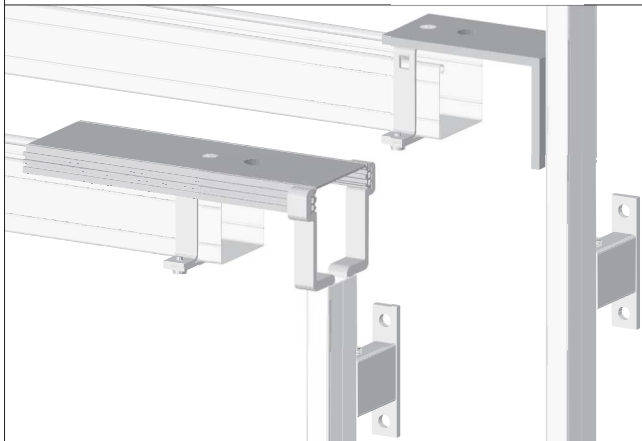
WIND LOAD LIMITS	
Blind width (cm)	Wind load limit (m/s)
130	22
200	20
300	18

SIZE LIMITATIONS					
		Width		Height	Surface
		min. (cm)	max. (cm)	max. (cm)	max. (m ²)
Single	EL 80 ASKW	76	300	300	6
Group	EL 80 ASKW		900	300	18

STACKING HEIGHT (MM) (intermediate blind heights on page 85)			
Blind height H	Stacking height S	Blind height H	Stacking height S
1000	162	2500	252
1500	192	3000	282
2000	222		

OPTIONS EL80ASKW

FREE HANGING



40° TIMER

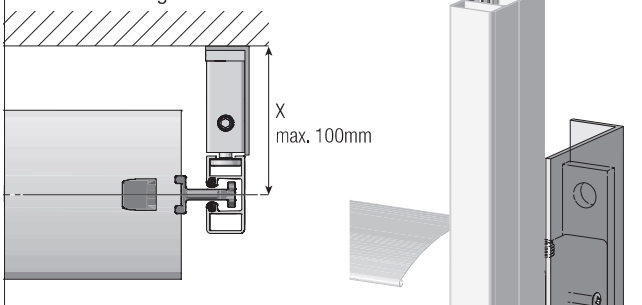
Standard;
lowering with closed slats

40° Timer;
lowering with slats 40° open

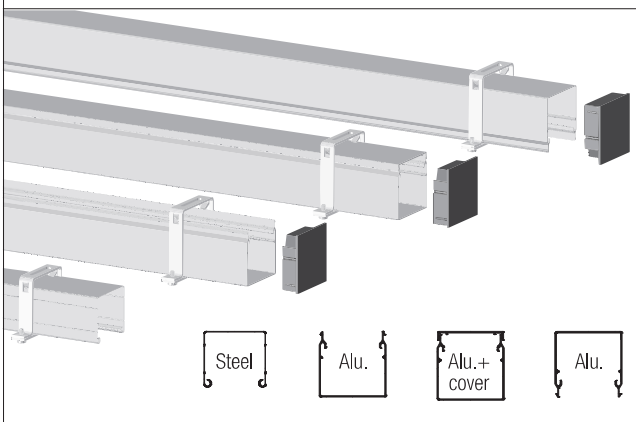


SIDE COVER PROFILE

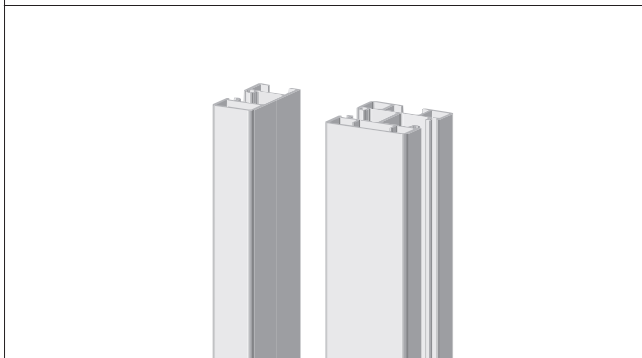
When mounting on face.



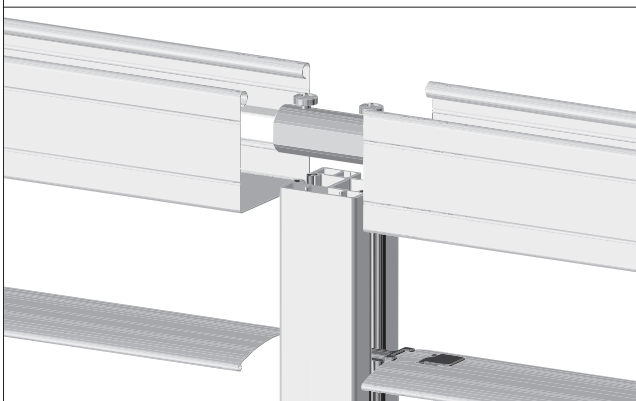
HEAD RAIL



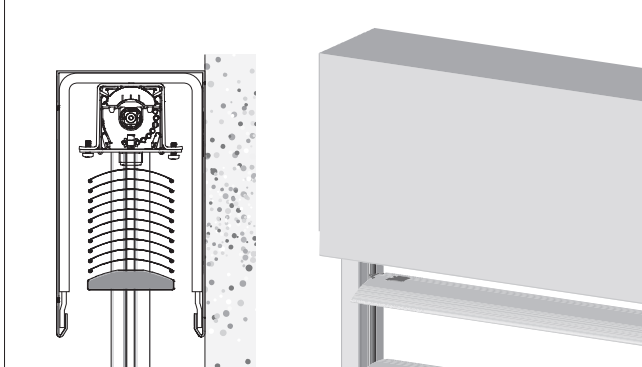
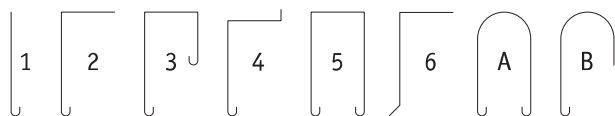
SIDE TRACKS



COUPLING



PELMET



FURTHER OPTIONS (Additional information on page 81)

- Side cover profile (on face mounting)
- Dual Light control
- Slow motion motor for more precise slat tilting
- Head rail end caps in milky white
- Beaded slat with inserted black seal to reduce contact noise and light leakage
- Perforated slats
- Free hanging system
- For possible motor controls see separately available documentation