

EL80AS, EL80ASF

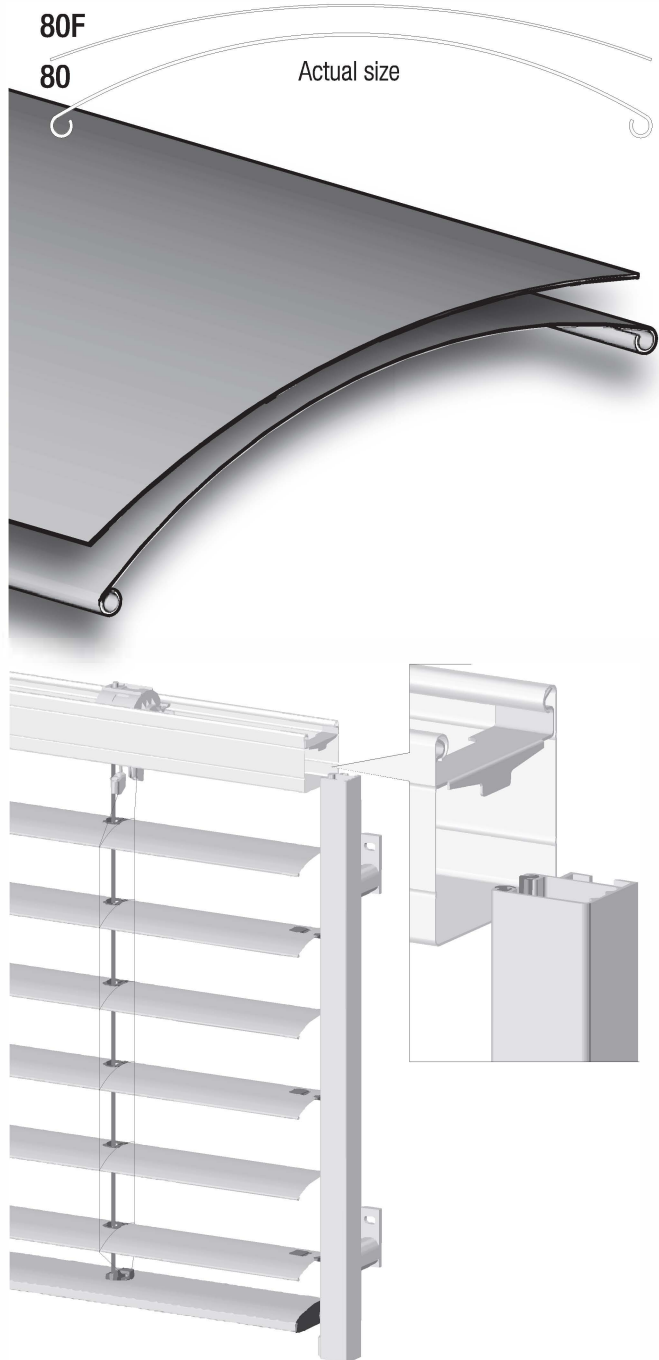
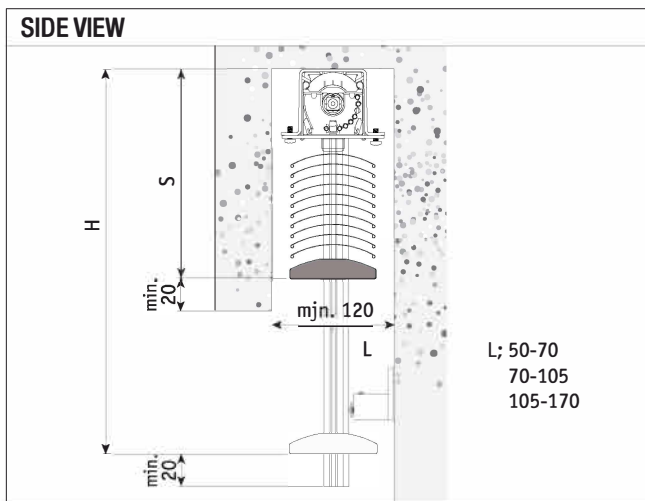
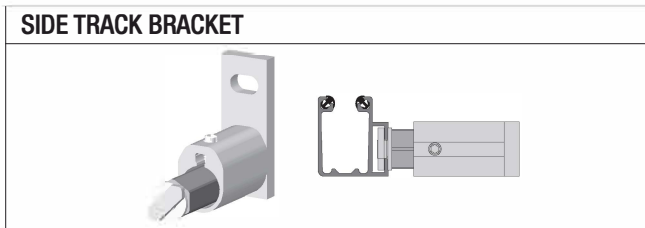
MOTOR OPERATED EXTERNAL VENETIAN BLIND 80 MM SLATS WITH STANDARD SIDE GUIDING CHANNELS

EL80AS : beaded 80 mm slats

EL80ASF : flexible 80 mm slats

Description

- Roll formed zinc-plated steel U-shaped head rail 57 x 51 mm
- Thermally protected 230 V motor, dust and splash waterproof according to IP54
- Positive tilting mechanism to prevent slat movement by wind
- Lowering with slats closed, raising with slats 45° open
- Roll formed coil coated 80 mm slats of partly recycled aluminium
- Natural anodised or powder coated extruded aluminium bottom rail 80 x 22 mm
- Extruded side guiding channels 27 x 24 mm with groove in similar finish and black insert for noise reduction
- Black bottom rail end caps, lift tape and Aramid reinforced polyester ladder cords
- UV and weather resistant components of mixed composition
- Wind stable as further determined by size and controls

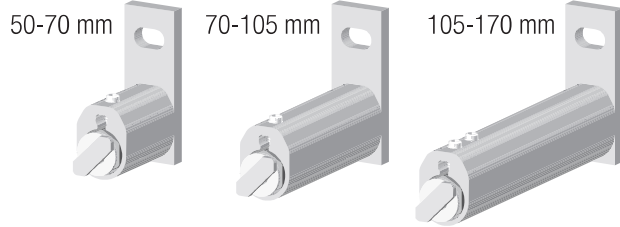


		width		height max. (cm)	surface max. (m ²)
		min. (cm)	max. (cm)		
Single	EL 80 AS	58	500	400	16
	EL 80 ASF	58	300	400	12
Group	EL 80 AS		1000	400	20
	EL 80 ASF		1000	400	20

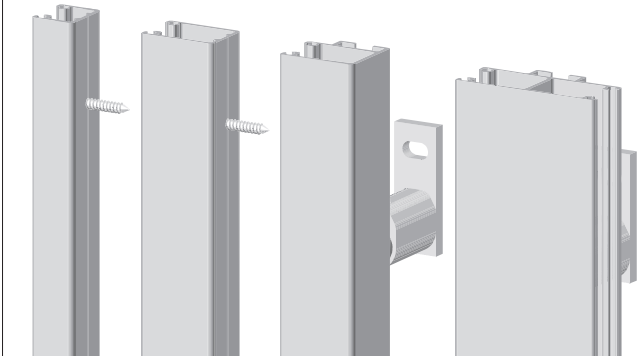
STACKING HEIGHT (MM) (intermediate blind heights on page 85)								
Blind height	Stacking height 80AS	Stacking height 80ASF	Blind height	Stacking height 80AS	Stacking height 80ASF	Blind height	Stacking height 80AS	Stacking height 80ASF
1000	173	133	2500	263	185	4000	354	222
1500	202	155	3000	294	197	4500	387	
2000	234	172	3500	324	210			

OPTIONS EL80AS, EL80ASF

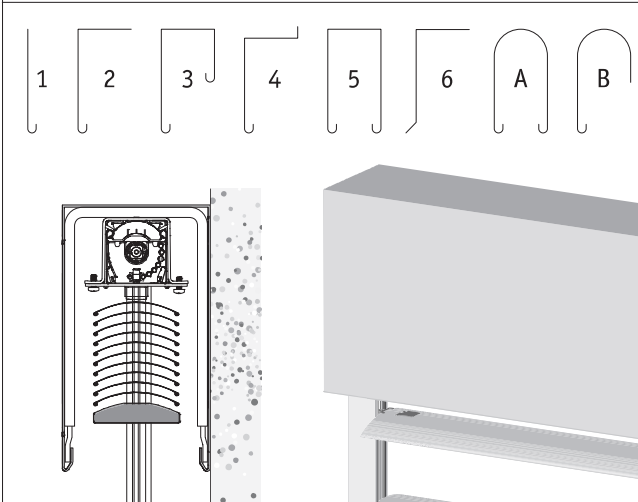
SIDE TRACK BRACKETS



SIDE TRACKS



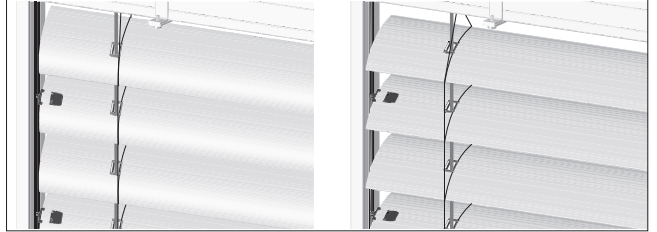
PELMET



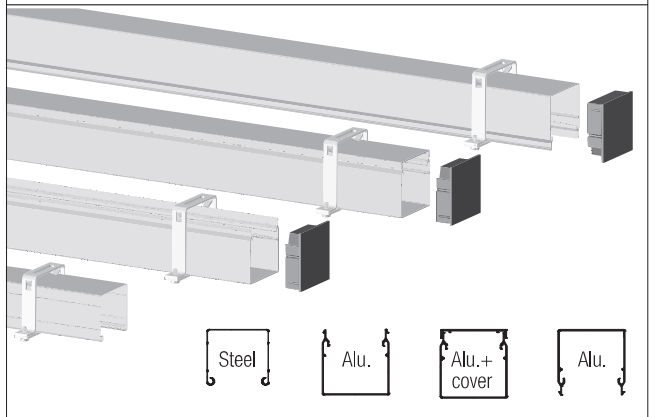
40° TIMER

Standard;
lowering with closed slats

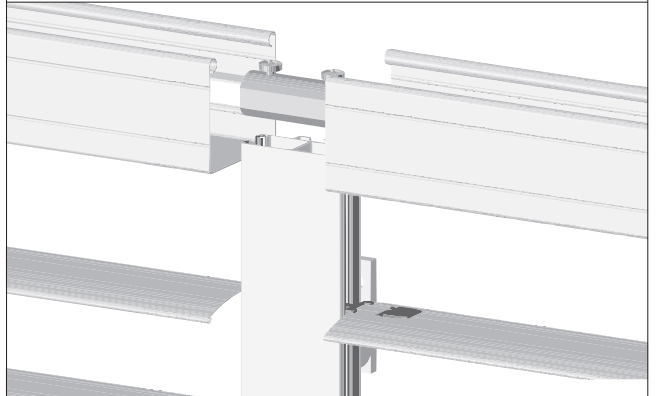
40° Timer;
lowering with slats 40° open



HEAD RAIL



COUPLING



FURTHER OPTIONS (Additional information on page 81)

- Quick raise system for emergency situations (EL80ASN)
- Dual Light Control
- Slow motion motor for more precise slat tilting
- Beaded slat with inserted black seal to reduce contact noise and light leakage
- Perforated slats
- Additional guiding cable(s)
- For possible motor controls see separately available documentation
- Lockable bottomrail, to use in case of an emergency